

# PJ Bear

Designed by Sheri Small  
Created by Lorine Mason

For more information on  
Lorine Mason's designs, visit  
[LorineMasonDesigns.vpweb.com](http://LorineMasonDesigns.vpweb.com)

## Fabric Requirements:

From MicroChamois prints and  
solids by Baum Textile Mills

Cut the following pattern pieces  
from fabric as listed:

**Yellow:** Head – Front and  
Back, Muzzle, Ears – Cut 2, Hands -  
Cut 4

**White:** Ears – Cut 2, Soles, Nightcap  
Tassel

**Stripe:** Collar, Pajama Bodice Front,  
Pajama Back, Pajama Lower Front,  
Pajama Sleeve Outside, Pajama  
Sleeve Inside, Pajama Leg Outside,  
Pajama Leg Inside, Pajama Cuff – 2" x  
6" - Cut 2 , Nightcap, Nightcap Band

**Heart:** Blanket

## Accessories:

Animal Eyes  
Embroidery Floss & Needle  
Buttons  
Fiberfil Stuffing  
Paper & Pencil  
Basic Sewing Supplies

## Instructions:

**All seam allowances are 1/4".**  
Backstitch at beginning and end of all  
seams to secure stitching. (To back-  
stitch, stitch forward about 1/2", then  
set your machine to reverse and stitch  
over it.)

Fold front bodice in half right sides out  
along the center front, matching side  
seams. Stitch 1/2" away from the cen-  
ter fold, from the neckline down to the  
waist, creating a faux placket. Press  
faux placket open; centering it over  
front seam. Press, pin at top and bot-  
tom edges of the placket.

Stitch tail sections together, turn right

side out and lightly stuff with fiberfill. Pin  
the tail in position along the pajama back  
opening where indicated. Stitch the center  
back seam, leaving the back open.

Stitch shoulder seams.

Pin pleats into the lower front of paja-  
ma bottoms at points indicated. Stitch  
center front seam. Pin lower front of  
pajama bottoms to pajama bodice at  
waistline seam, stitch.

Stitch each of the two sets of hand sec-  
tions together. Turn right side out and  
press.

Stitch darts into the tops of each of the  
outer sleeve sections. When creating  
darts - use line drawing on patterns,  
pinch fabric right sides together on  
either side of the line creating a dart.  
Stitch from 3/8" down to nothing to  
form the dart. With right sides together,  
stitch outer and inner seams of sleeves  
together.

Stitch each of the short ends of cuffs  
together. Fold in half right sides  
together and pin to the bottom of the  
sleeves. Pin hands to bottom of  
sleeves, with cuffs between sleeve  
edges and hands. Stitch.

With the arms curving forward, pin  
sleeve to armholes. Stitch

Stitch darts into the hip and feet area of  
the outside legs. With right sides  
together, stitch outer and inner seams  
of legs together.

With right sides together, stitch soles to  
the bottom of each of the leg sections.

Pin legs to the bottom openings of  
pajamas, stitch.

Pin collar sections right sides together  
and stitch along the outside edges.

**BAUM** TEXTILE  
MILLS 



Turn right side out and pin to neckline.

Poke small holes into the bear head front piece and insert eyes. Attach with pressure-fitted backs.

Stitch darts in top and bottom of muzzle. Stitch center front muzzle seam, stitching up from bottom of muzzle to bottom of fold line.

Sew ears right sides together, using one of each color. Turn right side out. Fold a tuck into center of each ear section and pin to the inside of darts at the top of the head. Stitch across darts, enclosing the bottom edge of ears to head. Stitch center front seams of head, above and below the muzzle opening.

Stitch center seam of head back. Pin head back section to head front section and stitch together along side seams.

Insert head into body/pajama section of bear on top of the collar, right sides together, stitch around neckline seam. Turn right side out.

Inset fiberfill into the muzzle, stuffing firmly. Thread a needle and tie a knot at the end of thread. Stitch into the

seam line along the inside edge of muzzle, lay the thread across fiberfill and stitch into the opposite edge of muzzle seam. Repeat stitching through the edges of muzzle across the fiberfill to hold fiberfill snugly in place to the inside of the muzzle.

Stuff arms and legs of bear; stuffing hands and feet firmly, arms and legs softly. Continue stuffing head and body of bear. Sit bear in position periodically; checking that he sits upright unattended, adjusting the amount of fiberfill if necessary. Stitch the opening at the back closed.

**NightCap** - Measure the circumference of your bear's head, adjusting the measurement to allow for a fairly snug fit. Using a piece of 8 1/2" x 11" sheet of paper to create the pattern; measure from the bottom left hand corner of the paper, place a mark using 1/2 of the head measurement along the bottom edge of paper. Draw a line from the top left hand corner of the paper down towards the mark at the bottom of the paper. Note: this will form a triangle. Cut along the drawn line. Fold fabric right sides together; lay the left straight edge of pattern along the folded edge of fabric.(Note; do not cut along folded

edge of fabric.) Cut. Remove paper pattern, stitch along the right edge of fabric through all layers.

Cut a hat band; PJ's head measurement x 3" wide. Stitch two short ends of cap band together, fold band in half right sides out, pin to bottom edge of the nightcap matching wrong sides of nightcap to edge of cap band, stitch. Fold cap band to right hand side, covering the seam line.

**Night Cap Tassel** - Cut three 1/2" x 4" strips of white fabric using pinking shears. Layer the strips on top of each other and stitch through the center, gathering then together forming a tassel. Stitch to the top point of nightcap.

Using the project photo as a guide; stitch nose to the end of muzzle using embroidery thread.

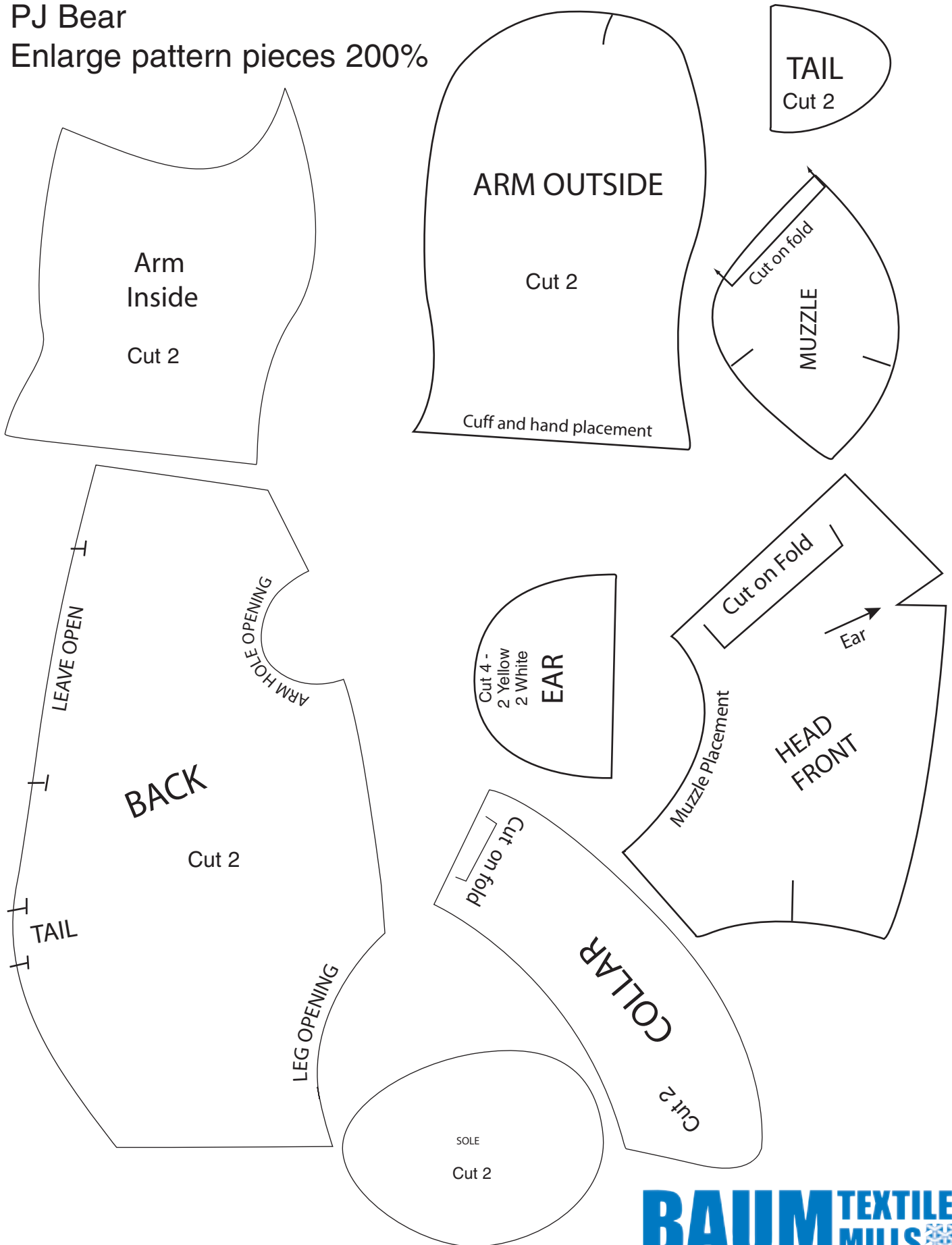
Stitch buttons to center of front placket.

**Blanket:** Cut a square of fabric using pinking shears.

**Experiment with a variety of color and print Micro Chamois combinations to create your own unique PJ Bear.**



PJ Bear  
Enlarge pattern pieces 200%



# PJ Bear

Enlarge pattern pieces 200%

